



ULTIMATE OUTDOOR SOLUTIONS



COMFORT IS SET
BY SCHILDR QUALITY,
NOT THE SEASONS

This guiding principle has driven us to build our products with exceptional quality and durability. We have been providing outdoor solutions for those who pursue ultimate comfort Since 2007.

With our solutions, we have crafted exceptional outdoor living spaces for everyone who has engaged with Schildr. We combine cutting-edge technology with innovative designs to ensure the reliability of all our solutions. We have a passionate team and dedicated partners committed to delivering the very best.







Design it yourself
with the 3D Configurator.

7



LOUVERED ROOF

55



SHADING SYSTEMS

23



SUNROOM

63



SLIDING DOORS AND WINDOWS

ULTIMATE OUTDOOR SOLUTIONS

LOUVERED ROOF

Unlock the full potential of your outdoor living areas and experience the true benefits of nature. Your home is not confined to its indoor spaces; it extends to all your exterior environments, including your yard.

Elevate your garden, poolside, restaurant or hotel, with our bioclimatic pergola systems, crafted from premium Aluminum slats. These innovative solutions offer unmatched comfort and style, seamlessly converting your outdoor spaces into elegant retreats.

Our bioclimatic pergolas are designed to be tailored to your unique vision and requirements. Create distinctive and inviting outdoor settings that reflect your imagination and enhance your living experience.





Direct the sunlight

Cabbana

The Bioclimatic Pergola Cabbana model is designed by professional engineers to ensure maximum comfort for customers, suitable for use in all four seasons.

Constructed entirely from Aluminum, this system can be configured as a single unit or as multiple units (2, 3, or 4 units) installed together. The Aluminum louvres on the roof can be adjusted up to 90 degrees using a remote control, making it suitable for use in all four seasons.





Customize with subsystems

You can enhance your project by using subsystems, allowing you to select and design the option that best suits your needs



Additional available options

Choose from various options for your comfort. Customize your design with additions tailored to fit your living space.



Heater: The carbon infrared heater with an overheating protection and timer function keeps your space warm even in harsh winter conditions.



Perimeter LED Lighting: Ambient illumination that can shine in any color you can imagine.



Embedded LED Lighting: Provides illumination with options compatible with all roof systems, featuring 24V DC, 150mA, 3.6W, 520lm, and various color choices. The wiring system complies with UL standards.



Fan Profile: a 2x6 profile same color as your system added below louvers to accommodate a fan (not included) installation.



Polyurethane Foam: Helps maintain a consistent temperature and prevent excessive heat built up alongside reducing rain noise..





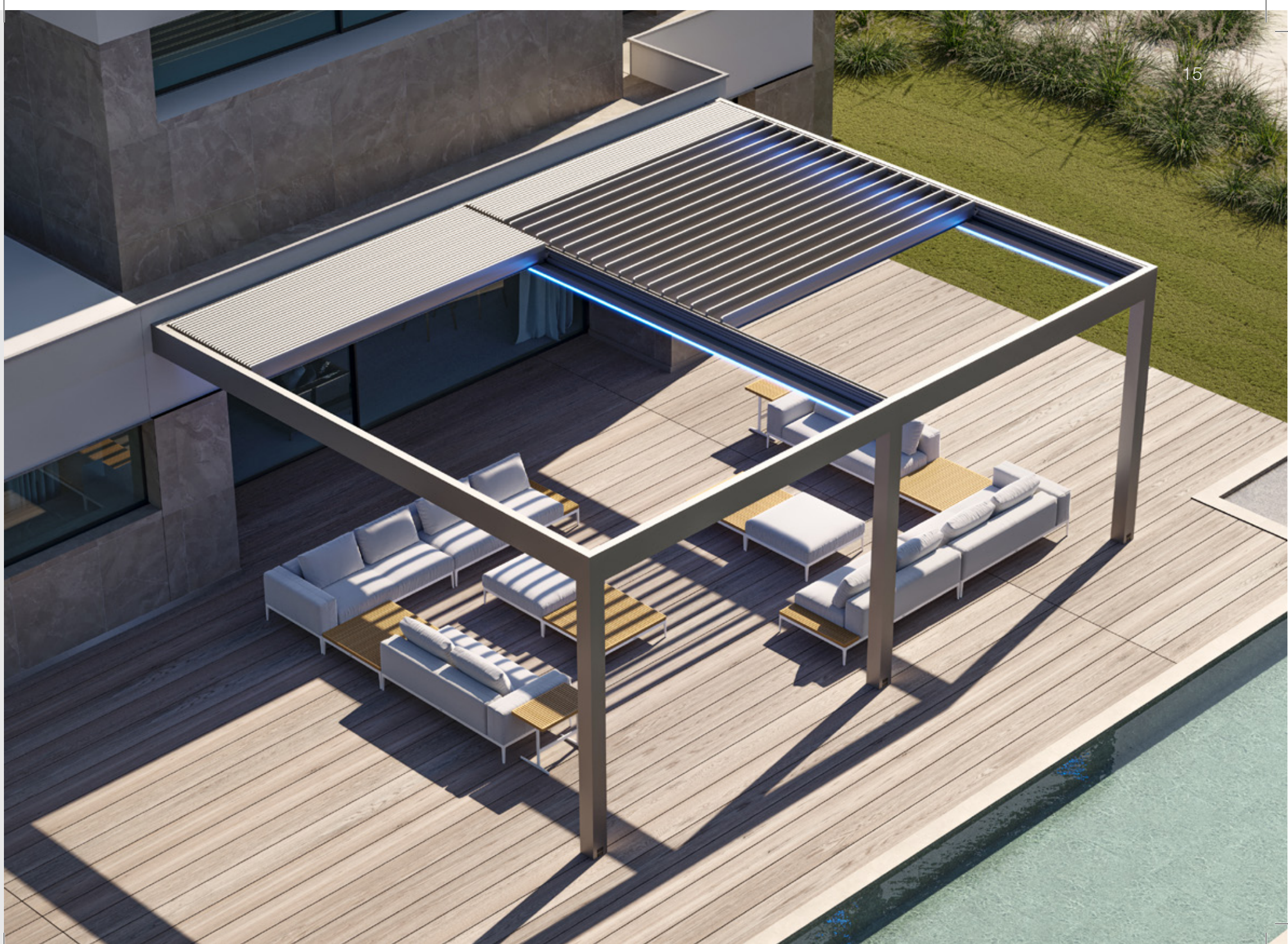


Challenge the seasons

Lanai

Designed by professional engineers, the Lanai retractable louver offers exceptional functionality for comfort and year-round use. The ceiling can be rotated up to 90 degrees and retracted to provide up to 60% openness using motors, making it a versatile choice for any season. Optional insulation foam inserts are available to reduce noise from rain and minimize heat buildup on hot, sunny days.





Customize with subsystems

You can enhance your project by using subsystems, allowing you to select and design the option that best suits your needs



Additional available options

Choose from various options for your comfort. Customize your design with additions tailored to fit your living space.



Heater: The carbon infrared heater with an overheating protection and timer function keeps your space warm even in harsh winter conditions.



Perimeter LED lighting: Ambient illumination that can shine in any color you can imagine.



Embedded LED Lighting: Provides illumination with options compatible with all roof systems, featuring 24V DC, 150mA, 3.6W, 520lm, and various color choices. The wiring system complies with UL standards.



Fan Profile: a 2x6 profile same color as your system added below louvers to accommodate a fan (not included) installation.



Polyurethane Foam: Helps maintain a consistent temperature and prevent excessive heat built up alongside reducing rain noise..







EACH OF OUR PRODUCTS IS DESIGNED AND CRAFTED TO ELEVATE THE ELEGANCE AND QUALITY OF YOUR LIVING SPACES.



ULTIMATE OUTDOOR SOLUTIONS

SUNROOM

The perfect solution for those who wish to enjoy the beauty of nature throughout all seasons.

Constructed with high-quality aluminum materials and the latest technologies, our winter gardens are built to withstand the elements. This durability ensures that you can enjoy your space for years to come. Whether you prefer a modern, minimalist, or traditional design, you can create a winter garden that perfectly suits your needs and style.





Merging the past with the future, and minimalism with elegance

Grande

Grande is a winter garden solution designed to meet even the most demanding needs, tailored to specific locations and requirements. Featuring a fixed glass roof, Grande offers durable solutions that stand up to the test of time. It can be customized with various glass thicknesses and types. Motorized and remote-controlled shading systems can be added to the side walls and ceiling of the structure. The Grande winter garden system combines the classic design of our heritage with unmatched comfort and beauty.





Customize with subsystems

You can enhance your project by using subsystems, allowing you to select and design the option that best suits your needs



Additional available options

Choose from various options for your comfort. Customize your design with additions tailored to fit your living space.



Heater: The carbon infrared heater with an overheating protection and timer function keeps your space warm even in harsh winter conditions.

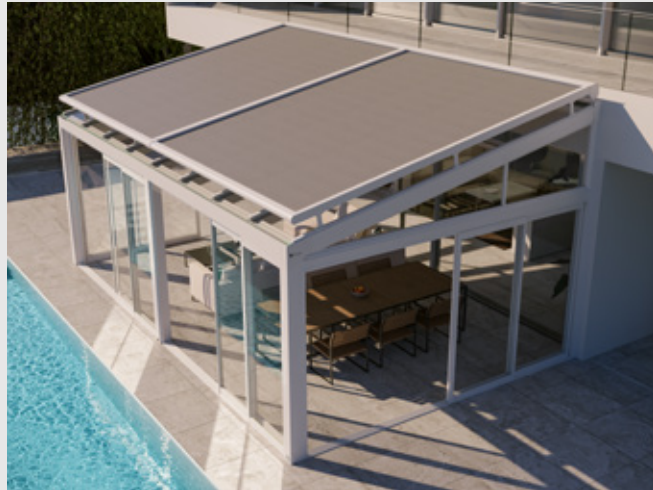


Perimeter LED lighting: Ambient illumination that can shine in any color you can imagine.



Fan Profile: a 2x6 profile same color as your system added below louvers to accommodate a fan (not included) installation.







ULTIMATE OUTDOOR SOLUTIONS

Ultimate comfort meets simplicity

Panora Plus

Thermal glass version of our specially designed Panora system.

With its minimalist design and the air gap between the glass panes, it offers exceptional insulation. The roof's pitch facilitates easy water drainage, yet the design ensures that this slope remains discreetly hidden.

You can customize the Panora Plus with optional lighting, heating, and shading systems to perfectly suit your space. The side walls can be configured as either sliding or folding operable panels. With the Panora Plus, you can enjoy uninterrupted comfort throughout all seasons.





Customize with subsystems

You can enhance your project by using subsystems, allowing you to select and design the option that best suits your needs



Additional available options

Choose from various options for your comfort. Customize your design with additions tailored to fit your living space.



Heater: The carbon infrared heater with an overheating protection and timer function keeps your space warm even in harsh winter conditions.



Perimeter LED lighting: Ambient illumination that can shine in any color you can imagine.



Embedded LED Lighting: Provides illumination with options compatible with all roof systems, featuring 24V DC, 150mA, 3.6W, 520lm, and various color choices. The wiring system complies with UL standards.



Fan Profile: a 2x6 profile same color as your system added below louvers to accommodate a fan (not included) installation.



Experience nature within your home

Panora

The specially designed Panora system is an indispensable winter garden, offering panoramic views and a minimalist aesthetic. This system, crafted with laminated glass and a fully Aluminum frame, presents a unique design.

The glass roof features a discreet slope, and the glass profiles used in the roof ensure seamless drainage of water into the concealed gutter and away from the posts. PVC pipes within the posts prevent water ingress into the system. The LED lights in the ceiling are customizable in length, and optional Perimeter LED lighting enhances the Panora's appeal at night.

All electrical cables in the system are UL certified. For added comfort and year-round use, sliding glass wall systems or ZIP shading solutions can be incorporated.





Customize with subsystems

You can enhance your project by using subsystems, allowing you to select and design the option that best suits your needs



Additional available options

Choose from various options for your comfort. Customize your design with additions tailored to fit your living space.



Heater: The carbon infrared heater with an overheating protection and timer function keeps your space warm even in harsh winter conditions.



Perimeter LED lighting: Ambient illumination that can shine in any color you can imagine.



Embedded LED Lighting: Provides illumination with options compatible with all roof systems, featuring 24V DC, 150mA, 3.6W, 520lm, and various color choices. The wiring system complies with UL standards.



Fan Profile: a 2x6 profile same color as your system added below louvers to accommodate a fan (not included) installation.



Experience unmatched comfort at the heart of nature...

Polad

Achieve your desired ceiling height with a winter garden that integrates seamlessly into spaces with lower heights. It features a custom design with a combination of flat and sloped roof variations.

Its minimalist design brings modern elegance to your living spaces.





Customize with subsystems

You can enhance your project by using subsystems, allowing you to select and design the option that best suits your needs



Additional available options

Choose from various options for your comfort. Customize your design with additions tailored to fit your living space.



Heater: The carbon infrared heater with an overheating protection and timer function keeps your space warm even in harsh winter conditions.



Perimeter LED lighting: Ambient illumination that can shine in any color you can imagine.



Embedded LED Lighting: Provides illumination with options compatible with all roof systems, featuring 24V DC, 150mA, 3.6W, 520lm, and various color choices. The wiring system complies with UL standards.



Fan Profile: a 2x6 profile same color as your system added below louvers to accommodate a fan (not included) installation.



More space, more joy

Roomy

Roomy, crafted with our gable roof design and high-quality materials, is ideal for those who wish to bring the beauty of traditional aesthetics to their outdoor living spaces.

Featuring a rigid aluminum frame and heat-insulated fixed glass, Roomy offers exceptional durability. Its adaptable design integrates seamlessly with your home's architecture, allowing you to fully enjoy the warmth of your living space.





Customize with subsystems

You can enhance your project by using subsystems, allowing you to select and design the option that best suits your needs



Additional available options

Choose from various options for your comfort. Customize your design with additions tailored to fit your living space.



Heater: The carbon infrared heater with an overheating protection and timer function keeps your space warm even in harsh winter conditions.



Perimeter LED lighting: Ambient illumination that can shine in any color you can imagine.



Embedded LED Lighting: Provides illumination with options compatible with all roof systems, featuring 24V DC, 150mA, 3.6W, 520lm, and various color choices. The wiring system complies with UL standards.



Fan Profile: a 2x6 profile same color as your system added below louvers to accommodate a fan (not included) installation.



Reach the sky with a touch

Dynamic



Imagine seamlessly blending the beauty of nature with the comfort of your home, creating a flawless transition between your indoor and outdoor spaces. This is made possible with Dynamic's retractable roof system.

With Dynamic, quality and durability are paramount. To ensure your roof system remains sturdy and reliable for years, we use stainless steel accessories.



Customize with subsystems

You can enhance your project by using subsystems, allowing you to select and design the option that best suits your needs



Additional available options

Choose from various options for your comfort. Customize your design with additions tailored to fit your living space.



Heater: The carbon infrared heater with an overheating protection and timer function keeps your space warm even in harsh winter conditions.



Perimeter LED lighting: Ambient illumination that can shine in any color you can imagine.



Embedded LED Lighting: Provides illumination with options compatible with all roof systems, featuring 24V DC, 150mA, 3.6W, 520lm, and various color choices. The wiring system complies with UL standards.



Fan Profile: a 2x6 profile same color as your system added below louvers to accommodate a fan (not included) installation.







WE DESIGN AND
DEVELOP OUR UNIQUE
CREATIONS IN HOUSE
AND MANUFACTURE OUR
INNOVATIVE PRODUCT
LINES AT OUR
STATE-OF-THE-ART
FACILITY.



SHADING SYSTEMS

Shading systems are designed to block or control sunlight. These systems help protect indoor spaces from heat, create shade in outdoor areas, and contribute to energy efficiency. They can be implemented in various forms, depending on their intended use and design preferences. By selecting a shading system tailored to your needs, you can ensure a comfortable living environment both indoors and outdoors.





ULTIMATE OUTDOOR SOLUTIONS

Keep the sun at bay

Zion

Enhances airflow and shading with its slats within the sliding panels, ensuring optimal air circulation.





Air circulation and shading

Enhance your structure with a custom subsystem. Choose the option that best fits your project and design it yourself.



Product benefits

Discover a range of options for comfort. Make your choice and configure it yourself using our online configurator.



Shading: Adjustable shading based on the angle of the sun



Sliding Panels: Sliding functionality for the systems on the side walls

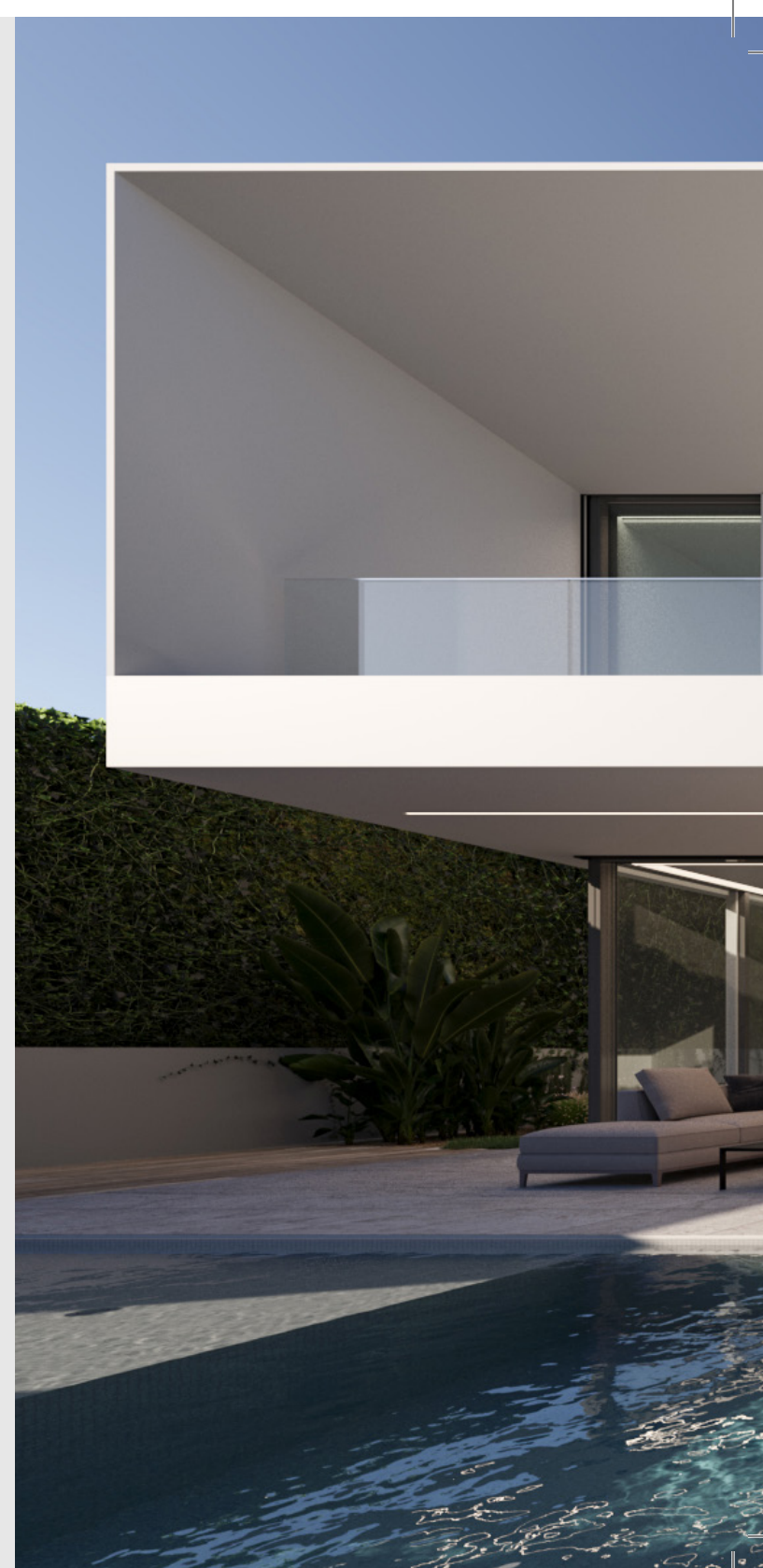


WE ARE A COMPANY
SPECIALIZING IN
THE DESIGN AND
MANUFACTURE OF
WINTER GARDENS,
BIOCLIMATIC PERGOLAS,
AND SLIDING DOOR AND
WINDOW SYSTEMS.



SLIDING DOORS AND WINDOWS

Customize your projects with door and window selections that complement every architectural style. It's up to you to defy the ordinary and make a difference with the quality in your environments. Experience the impact of small touches in your living spaces that create significant changes.





Enhance your architectural elegance with our side systems.

Classy

When it comes to advanced insulation..

With a 75% opening, the ventilation capability ensures optimal comfort. Its thermal break profiles provide excellent thermal and acoustic insulation.

The system features dual, triple, and quadruple rail options, allowing for wings up to twice the quantity of rails with 2 panels per rail.

Designed with both style and functionality in mind, it includes a range of well-engineered lock and handle systems for enhanced usability.





Customize with subsystems

You can enhance your project by using subsystems, allowing you to select and design the option that best suits your needs



Additional available options

Choose from various options for your comfort. Customize your design with additions tailored to fit your living space.



Insulated Glass: Offers exceptional insulation and protection with its dual-layer glass design.



Thermal break Profile: Provides additional insulation with specially manufactured aluminum material.



Rail Options: Available in dual, triple, and quadruple systems. Wings can be made up to twice the quantity of rails.



For those seeking elegance and quality combined...

Minima

Brighten your spaces with a glass wall system that stands out for its elegant design! This product, which reflects the impact of outdoor environments more effectively indoors, features a glass system that can be slid open from both sides and offers an 80% opening capability, providing an expansive view.

The aluminum seals between the panels ensure insulation and reduce the system deflection.





A glass system that slides open from both sides and an opening capacity of up to 80%.

You can enhance your project by using subsystems, allowing you to select and design the option that best suits your needs



Additional available options

Choose from various options for your comfort. Customize your design with additions tailored to fit your living space.



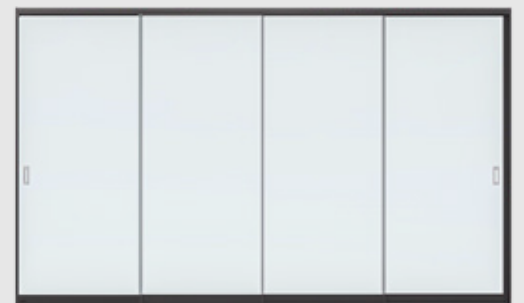
Transparent seal: The transparent seal option provides a wider field of view with no obstruction



Insulating seal: Aluminum seals support additional air insulation.



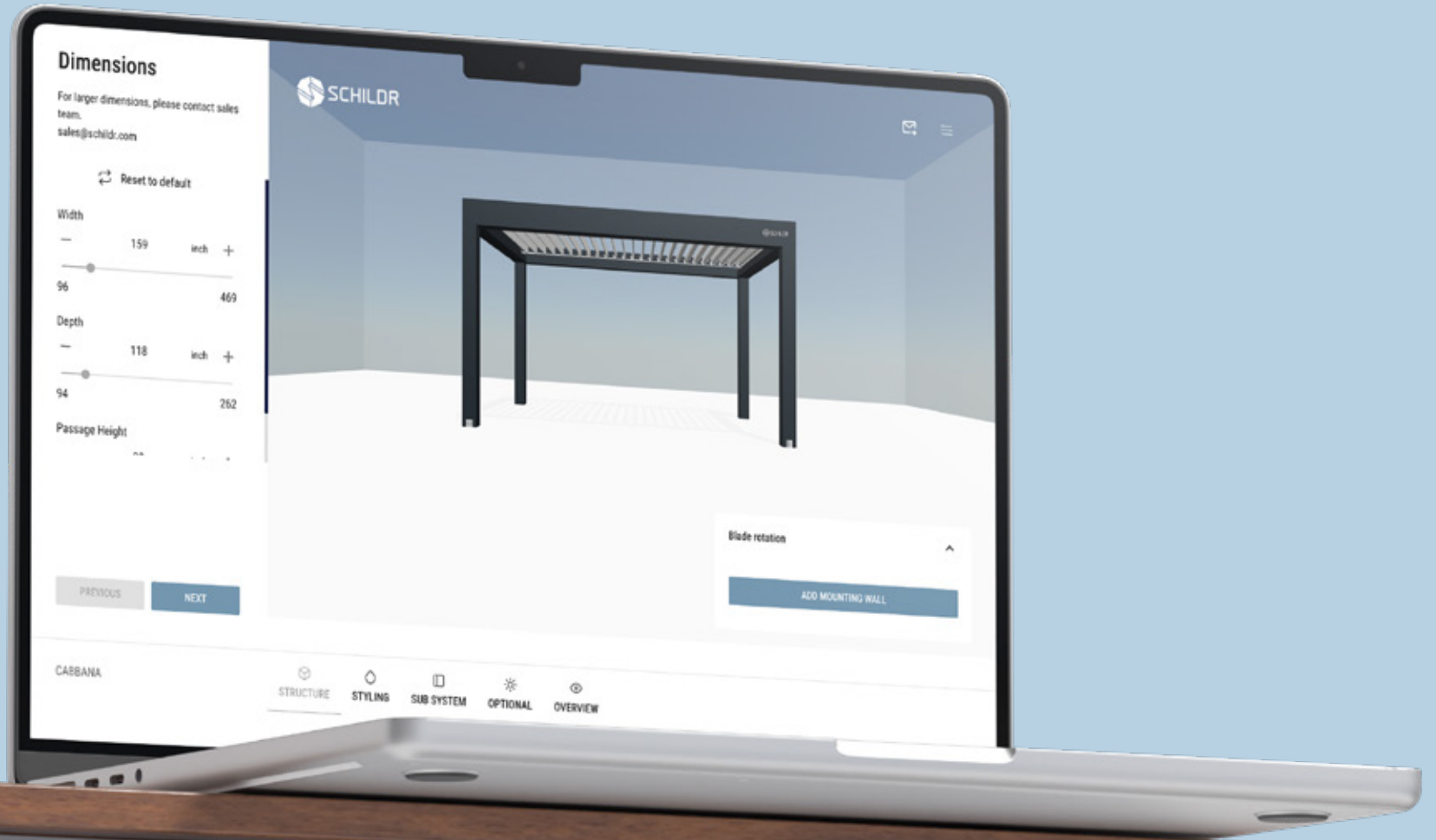
Minimalist design: The sleek design offers an expansive view of the outdoor scenery.



Design it yourself with the 3D Configurator.

Design on your own
by scanning the QR code.





CONTACT US

KOCAELİ, TÜRKİYE

ST. 1802 NO 5 BARISH, GEBZE 41400
KOCAELİ/TÜRKİYE
www.schildr.com.tr / +90 544 399-3010
info@schildr.com.tr

NEW-YORK, USA

104 W 40TH ST SUITES 400&500,
NEW YORK, NY 10018, USA
www.schildr.com / (855) 620-3010
sales@schildr.com

NEW JERSEY, USA

2740 NJ-10, SUITE 201,
MORRIS PLAINS, NJ 07950
www.schildr.com / (855) 620-3010
info@schildr.com









WWW.SCHILDR.GLOBAL